

ProRail Heavy Duty Posts

ProRail posts have been specially designed for a quick and simple installation. Assemble the post by screwing on the required top saddle using the allen key and coach screw provided. With a full range of post and saddle options available to suit almost any handrail project ProRail posts make it easy to get a modern and stylish design in any application.

- **Interchangeable Top Saddles** Simply screw on required top saddle using cap screw and allen key supplied.
- **Seamlessly Welded Saddle Base** All ProRail posts are supplied with a seamlessly welded saddle base.
- **Holes Drilled to Specifications** Holes are pre-drilled to your exact specifications prior to dispatch. Nut rivets can also be inserted.
- **Satin or Mirror Polish Finish** All ProRail posts are supplied in either satin or mirror polish finishes.
- **Cover Plate Included** Satin or mirror polish finish cover plate included.
- **ProRail Heavy Duty Base Plate** ProRail heavy duty base plates are supplied fully welded to the post.

P5200

Round 2" End / Corner / Intermediate Post (for Flat Sections) : Satin Finish

Stock Code	D	T	H*	Top Saddles	Holes	Finish	Box Qty	Weight
P5200-501.6SF	50.8mm (2")	1.6mm	960	P5210/20/30/37	Up to 11	Satin	4	2.9kg
P5200-503.0SF	50.8mm (2")	3.0mm	960	P5210/20/30/37	Up to 11	Satin	4	4.2kg

Material: 316 Grade Stainless Steel Assembly: Base Plate - Cast : Cover Plate - Punched : Tube - Welded Seam Surface Finish: Satin Finish

* H measurement is the overall height of post with top saddle fitted.

P5200

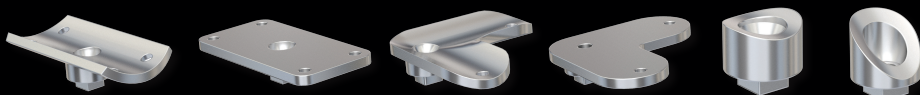
Round 2" End / Corner / Intermediate Post (for Flat Sections) : Mirror Polish

Stock Code	D	T	H*	Top Saddles	Holes	Finish	Box Qty	Weight
P5200-501.6MP	50.8mm (2")	1.6mm	960	P5210/20/30/37	Up to 11	Mirror	4	2.9kg
P5200-503.0MP	50.8mm (2")	3.0mm	960	P5210/20/30/37	Up to 11	Mirror	4	4.2kg

Material: 316 Grade Stainless Steel Assembly: Base Plate - Cast : Cover Plate - Punched : Tube - Welded Seam Surface Finish: Mirror Polish

* H measurement is the overall height of post with top saddle fitted.

Top Saddle Options



P5210R-SF/MP

P5210F-SF/MP

P5220R-SF/MP

P5220F-SF/MP

P5230R-SF/MP

P5237R-SF/MP

Material: 316 Grade Stainless Steel Assembly: Cast Surface Finish: Satin Finish

All top saddles include fixing screw.

P5300

Round 2" End / Intermediate Post (For Angled / Stair Sections) : Satin Finish

Stock Code	D	T	H*	Top Saddles	Holes	Finish	Box Qty	Weight
P5300-501.6SF	50.8mm (2")	1.6mm	960	P5310	Up to 11	Satin	4	2.9kg
P5300-503.0SF	50.8mm (2")	3.0mm	960	P5310	Up to 11	Satin	4	4.2kg

Material: 316 Grade Stainless Steel Assembly: Base Plate - Cast : Cover Plate - Punched : Tube - Welded Seam Surface Finish: Satin Finish

* H measurement is the overall height of post with top saddle fitted.

P5300

Round 2" End / Intermediate Post (For Angled / Stair Sections) : Mirror Polish

Stock Code	D	T	H*	Top Saddles	Holes	Finish	Box Qty	Weight
P5300-501.6MP	50.8mm (2")	1.6mm	960	P5310	Up to 11	Mirror	4	2.9kg
P5300-503.0MP	50.8mm (2")	3.0mm	960	P5310	Up to 11	Mirror	4	4.2kg

Material: 316 Grade Stainless Steel Assembly: Base Plate - Cast : Cover Plate - Punched : Tube - Welded Seam Surface Finish: Mirror Polish

* H measurement is the overall height of post with top saddle fitted.

Top Saddle Options



P5310R-SF/MP

P5310F-SF/MP

Material: 316 Grade Stainless Steel Assembly: Cast Surface Finish: Satin Finish

All top saddles include fixing screw.



Plastic Packers

Each Post includes a full set of plastic packers to position under base plate if required.



P5200



P5300

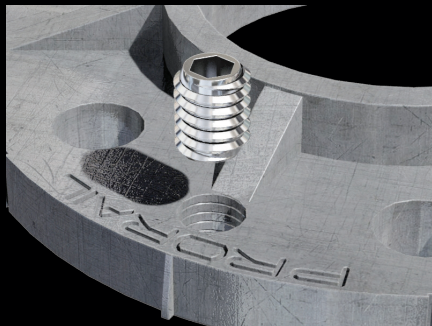


Professional Modular Handrail Systems™

ProRail Heavy Duty Base Plates

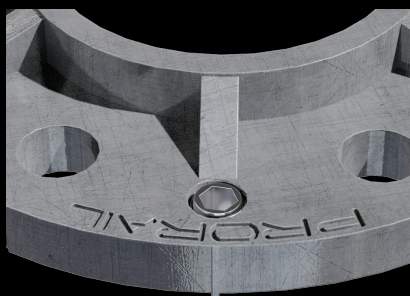
Base plate patent no: 2013101216

All round posts come standard with the new ProRail heavy duty cast base plate welded to the bottom of the post. With multiple fixing holes, position indicator lines, post leveling system, and heavy duty construction these base plates make installations quicker and easier than ever before. See page 84 for full details on the ProRail heavy duty base plate.



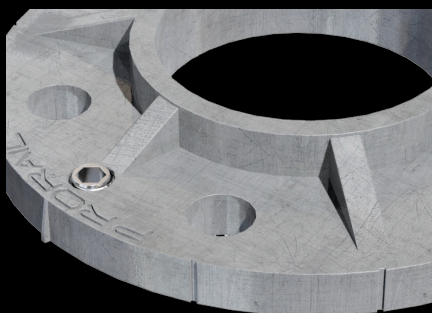
Post Leveling System

The ProRail post leveling system can be used to make the post level on uneven surfaces. Once level insert plastic packers and fasten post to surface.



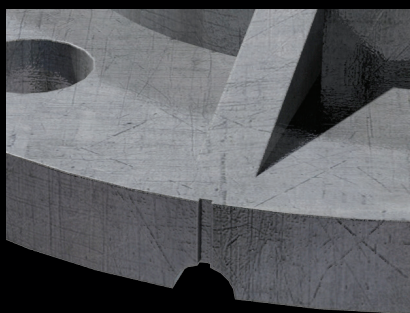
6 Mounting Holes

With 6 mounting holes there are multiple fixing options, ensuring you can securely fix your post onto almost any surface with minimal fuss.



Post Position Indicator Lines

Base plate indicator lines (every 30°) make it quick and easy to follow a straight line or find 90° on corner sections.



Drainage Hole

Drainage hole eliminates water build up and drains water from inside the post tube.



Heavy Duty Branded Packaging

- Super stylish box design
- High quality wax coated box for added durability
- Triple layered polystyrene packaging
- Securely holds up to 4 posts
- Protects posts during transport
- Compartments designed to hold posts, saddles, screws, allen key and packers

Available From

